

BVC
Value in Valving

by  **BASECAMP
PROCESS
COMPONENTS**



RESILIENT SEATED BUTTERFLY VALVE SERIES VF7

FEATURES

Bi-Directional

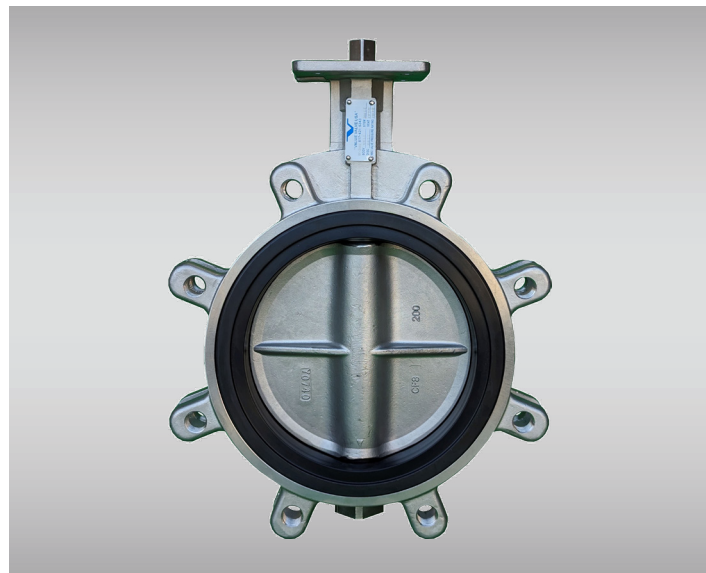
- Bubble tight shutoff up to 50,000 cycles and standard pressure rating of 250psig

ISO 5211 Stem

- Allows use of any ISO5211 actuator. Most manufacturers use ISO pad only and a special stem that **DOES NOT** fit ISO5211 actuator.

Disc

- The disc is investment cast and utilizes stiffening vanes to reduce pressure drop and increase allowable pressure. The Disc edge is Flat allowing the disc to slide thru the seat instead of pushing through the seat. Reduced diameter disc for lower pressures and resultant longer seat life are available for 87 psig shutoff.



Technical Data

Size Range	1.5" – 48"
	DN40 – DN1200
Temperature Range	-4°F to 400°F
	-20°C to 204°C
Pressure Rating	150psi (10bar) 1.5" – 48"
	230psi (16bar) 1.5" – 24"
Body Style	Wafer
	Lug
	Flange

Applicable Standards

Face to Face	API 609, ISO5752
Design & Pressure	ISO 5208, AWWA C504, ASME B16.54
Inspection & Testing	ISO 5208
Mounting	ISO 5211
EX Certificate	ATEX 94/9/EG Group II Category 2 GD
ABS Certificate	ABS Steel Vessel Rules 1-1-7/7, 4-6-2/5.11

Material Options

Body	Cast Iron
	Ductile Iron
	Carbon Steel
	304SS, 316SS
Disc	304SS, 316SS
	Aluminum Bronze
	Nylon 11 Coated 316SS Nylon 11 Coated Ductile Iron
Seat	EPDM
	Buna N
	Viton
	Hypalon
	Silicone
	Neoprene
Stem/Shaft	410SS
	304SS
	316SS 17-4 Ph SS

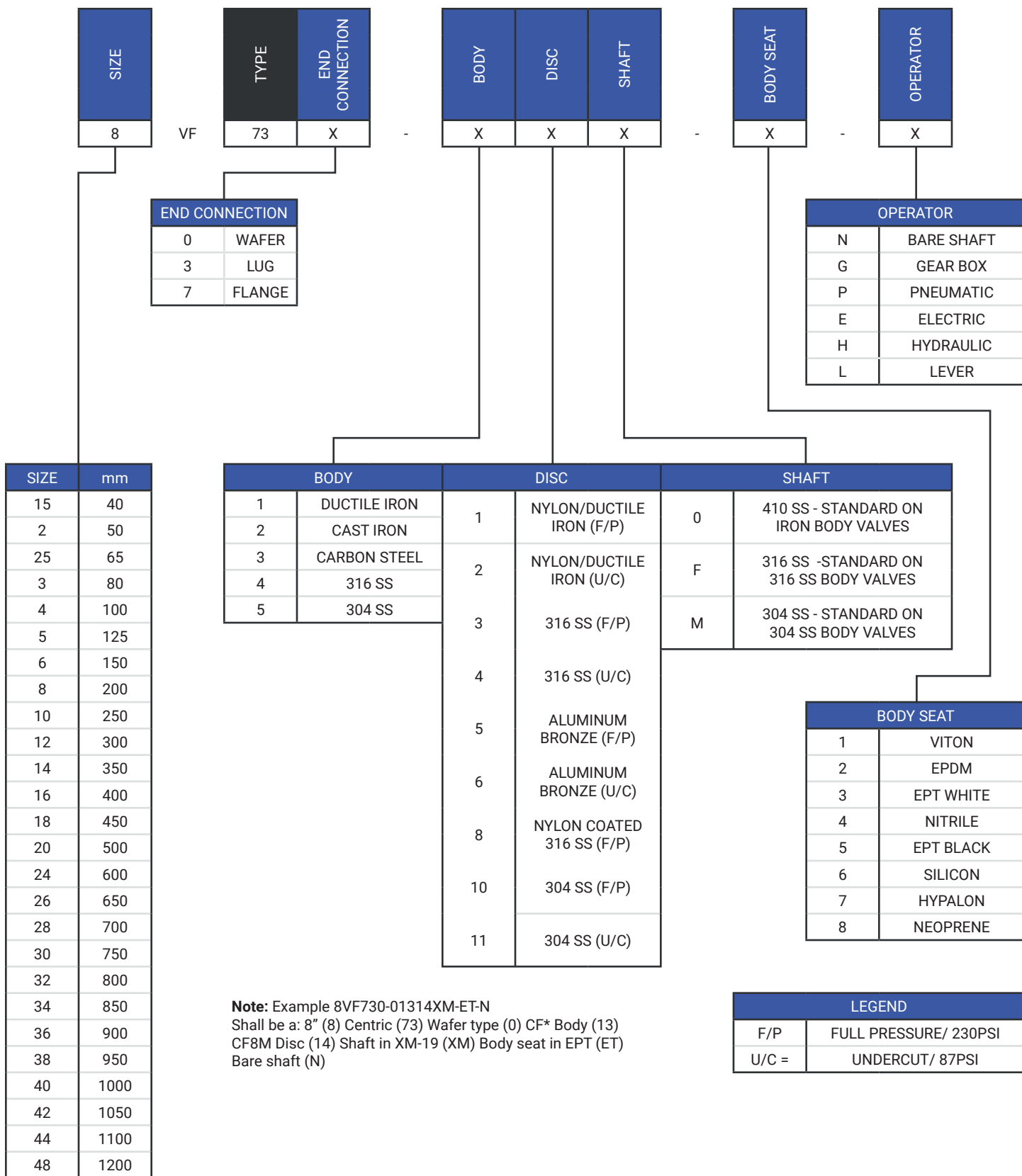
Operators

Manual	Bare Shaft
	Gear Box
	Lever
Control	Electric
	Hydraulic
	Pneumatic

Technical details subject to change without notice.



ORDERING MATRIX

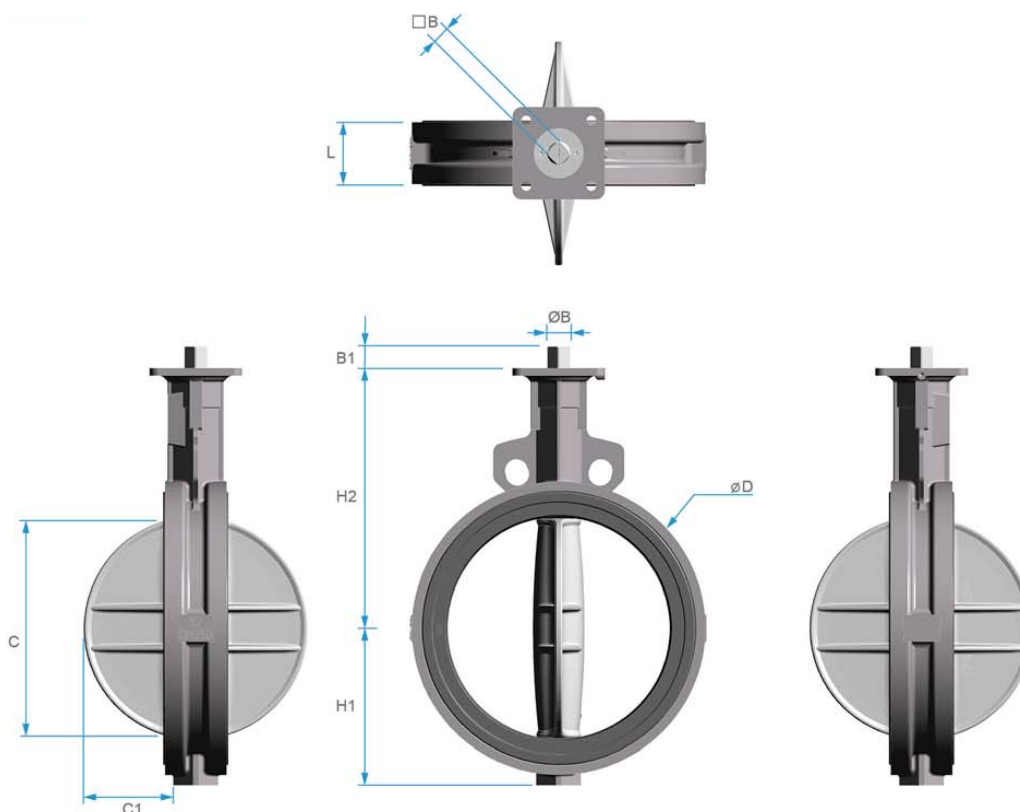


Technical details subject to change without notice.



VF730 PTFE Dimensions

Wafer Type Dimensions – VF-730 Series DN 40 ~ DN 300



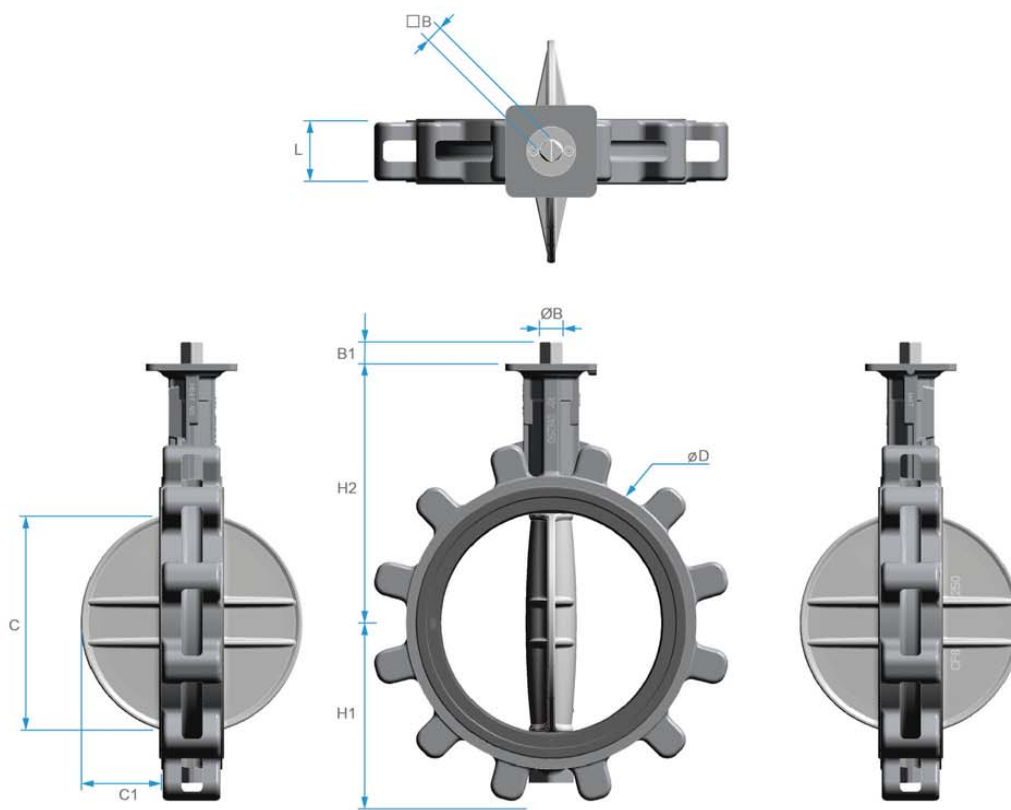
Size		Face to Face				Mounting Flange (ISO 5211)		Flat Shaft End			Disc Clearance		Weight
mm	inch	L	H1	H2	D	Type	PCD	B	B1	B	C	C1	lbs
40	1 ½	1.3	2.36	4.72	3.19	F07	2.76	0.43	0.75	0.55	1.34	0.28	4.4
50	2	1.69	2.56	5.63	3.78	F07	2.76	0.43	0.75	0.55	1.54	0.31	6.6
65	2 ½	1.81	2.8	6.1	4.33	F07	2.76	0.43	0.75	0.55	2.17	0.51	8.4
80	3	1.81	3.03	6.38	4.88	F07	2.76	0.43	0.75	0.55	2.72	0.75	8.8
100	4	2.05	4.21	7.13	5.83	F07	2.76	0.43	0.75	0.55	3.58	1.06	11.7
125	5	2.2	4.8	7.76	7.09	F07	2.76	0.55	0.75	0.75	4.53	1.42	16.7
150	6	2.2	5.51	8.27	8.11	F07	2.76	0.55	0.75	0.75	5.51	1.85	18.1
200	8	2.36	6.5	9.45	10.2	F10	4.02	0.67	0.94	0.87	7.32	2.68	29.8
250	10	2.68	7.91	11.26	12.6	F10	4.02	0.75	0.94	0.98	9.41	3.54	46.7
300	12	3.07	9.21	12.17	14.57	F10	4.02	0.87	0.94	1.18	11.34	4.37	71.6
350	14	3.07	11.87	12.95	16.22	F12	4.92	1.06	1.14	1.38	12.8	5.04	105.8
400	16	4.02	13.13	14.21	18.7	F12	4.92	1.26	1.14	1.65	14.76	5.63	132.3
450	18	4.49	14.11	15.47	20.87	F14	5.51	1.26	1.5	1.77	16.65	6.38	176.4
500	20	5	15.45	16.81	23.03	F14	5.51	1.42	1.5	1.97	18.62	7.17	275.6
600	24	6.06	17.89	19.37	27.05	F16	6.5	1.81	1.89	2.36	22.05	8.43	440.9

Technical details subject to change without notice.



VF733 PTFE Dimensions

Lug Type Dimensions – VF-733 Series DN 40 ~ DN 300



Size		Face to Face				Mounting Flange (ISO 5211)		Flat Shaft End			Disc Clearance		Weight
mm	inch	L	H1	H2	D	Type	PCD	B	B1	B	C	C1	lbs
40	1 ½	1.3	2.36	4.72	3.19	F07	2.76	0.43	0.75	0.55	1.34	0.28	4.9
50	2	1.69	2.56	5.63	3.78	F07	2.76	0.43	0.75	0.55	1.54	0.31	7.5
65	2 ½	1.81	2.8	6.1	4.33	F07	2.76	0.43	0.75	0.55	2.17	0.51	8.8
80	3	1.81	3.03	6.38	4.88	F07	2.76	0.43	0.75	0.55	2.72	0.75	9.9
100	4	2.05	3.5	7.13	5.83	F07	2.76	0.43	0.75	0.55	3.58	1.06	16.8
125	5	2.2	4.41	7.76	7.09	F07	2.76	0.55	0.75	0.75	4.53	1.42	20.9
150	6	2.2	4.84	8.27	8.11	F07	2.76	0.55	0.75	0.75	5.51	1.85	22.9
200	8	2.36	5.91	9.45	10.2	F10	4.02	0.67	0.94	0.87	7.32	2.68	38.6
250	10	2.68	7.05	11.26	12.6	F10	4.02	0.75	0.94	0.98	9.41	3.54	58.4
300	12	3.07	8.5	12.17	14.57	F10	4.02	0.87	0.94	1.18	11.34	4.37	95.9
350	14	3.07	11.87	12.95	16.22	F12	4.92	1.06	1.14	1.38	12.8	5.07	127.9
400	16	4.02	13.13	14.21	18.7	F12	4.92	1.26	1.14	1.65	14.76	5.63	178.6
450	18	4.49	14.11	15.47	20.87	F14	5.51	1.26	1.5	1.77	16.65	6.38	242.5
500	20	5	15.45	16.81	23.03	F14	5.51	1.42	1.5	1.97	18.62	7.17	341.7
600	24	6.06	17.89	19.37	27.05	F16	6.5	1.81	1.89	2.36	22.05	8.43	571

Technical details subject to change without notice.



Basecamp Process Components, LLC
 7685-A Corporate Blvd., Plain City, Ohio 43064, USA
 +1 614-873-8995 • info@bpcvalves.com • bpcvalves.com

FEATURES

"Valve Flow Coefficient (C_v) is the flow capability of a control valve at fully open conditions relative to the pressure drop across the valve."¹

$$Q = C_v \sqrt{\Delta P / G}$$

Where:

- Q = Capacity in gallons per minute
- C_v = Valve sizing coefficient determined experiments for each style and size of valve, using water at standard conditions as the test fluid
- ΔP = Pressure differential in psi
- G = Specific gravity of fluid (water at 60°F = 1.0000)

CV Flow Coefficient VF730 / VF733 / VF737

Size		Face to Face								
mm	inch	10%	20%	30%	40%	50%	60%	70%	80%	90%
40	1 ½	0.8	2.8	8.1	16.6	25.7	42.1	69	94.8	132.2
50	2	1.3	4.4	11.9	25.7	44.5	70.2	117	154.4	225.8
65	2 ½	2.3	8.8	21.3	41	71.4	111.2	218.8	280.8	368.6
80	3	2.9	11.5	30.4	56.2	97.1	147.4	250.4	395.5	497.3
100	4	4.4	17.1	45.6	84.2	139.2	258.6	422.4	709	845.9
125	5	7.6	28.1	72.5	138.1	253.9	461	700.8	1214.5	1454.3
150	6	11.7	48	111.2	204.8	381.4	634.1	1021.4	1474.2	2175
200	8	22.2	74.9	193.1	358	670.4	1164.2	1833.4	2702.7	3655.1
250	10	32.8	118.2	286.7	527.7	978.1	1710.5	2636	3809.5	5565.7
300	12	39.8	150.9	365	719.6	1330.3	2486.3	3800.2	5839.5	8257.9
350	14	55	190.7	456.3	930.2	1752.7	3010.4	4656.6	6726.3	9733.2
400	16	72.5	270.3	594.4	1260.1	2308.4	3955.8	6300.5	9475.8	13405.9
450	18	87.8	299.5	726.6	1413.4	2708.6	4592.3	7407.3	11084.6	15926
500	20	120.5	404.8	1005	1979.6	3610.6	6257.2	9960.2	15337.5	21935.2
550	22	146.3	489.1	1215.6	2395	4368.8	7571.1	12051	18557.4	26541.5
600	24	162.6	578	1349	2795.1	5225.2	8846.4	13975.7	21163	29503.9
650	26	190.7	677.4	1583	3280.7	6132	10381.4	16401.1	24836.8	34626.2
700	28	223.5	771	1958.6	3772.1	7008.3	12471	20407.1	29477	43080.6
750	30	237.5	819	2079.1	4001.4	7434.2	13229.2	21648.5	31270.6	45702.5
800	32	300.7	1138.4	2693.3	5303.6	9635	16523.9	26934.6	36987.2	53814
900	36	384.9	1466	3451.5	6858.5	12647.4	21275.3	34814.5	50184.8	71421.5
950	38	538.2	2024.1	4703.4	8400.6	14238.9	23166	38013.3	57704.4	72715.5
1000	40	596.7	2245.2	5213.5	9308.5	15788	25668.6	42120	63939.3	80582.6
1050	42	657.5	2475.7	5748.2	10262.1	17406.1	28300	46437.3	70493.7	88842.8
1100	44	721.9	2716.7	6308.6	11263.6	19103.8	31058.8	50965.2	77366.3	97505.5
1200	48	858.8	3232.7	7507.9	13404.7	22734.3	36962.6	60652.8	92073.2	116039.4

Technical details subject to change without notice.



Basecamp Process Components, LLC

7685-A Corporate Blvd., Plain City, Ohio 43064, USA

+1 614-873-8995 • info@bpcvalves.com • bpcvalves.com